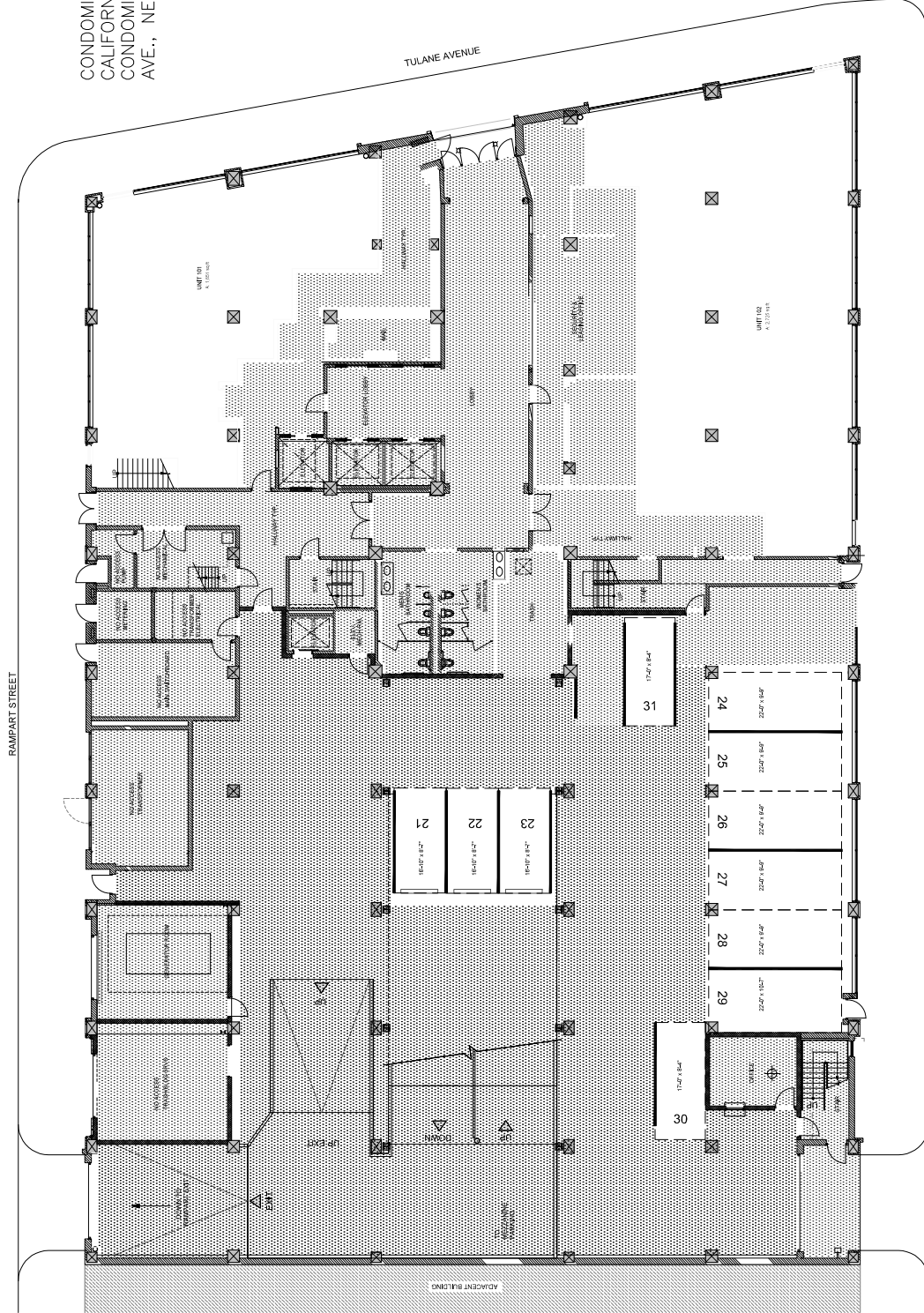


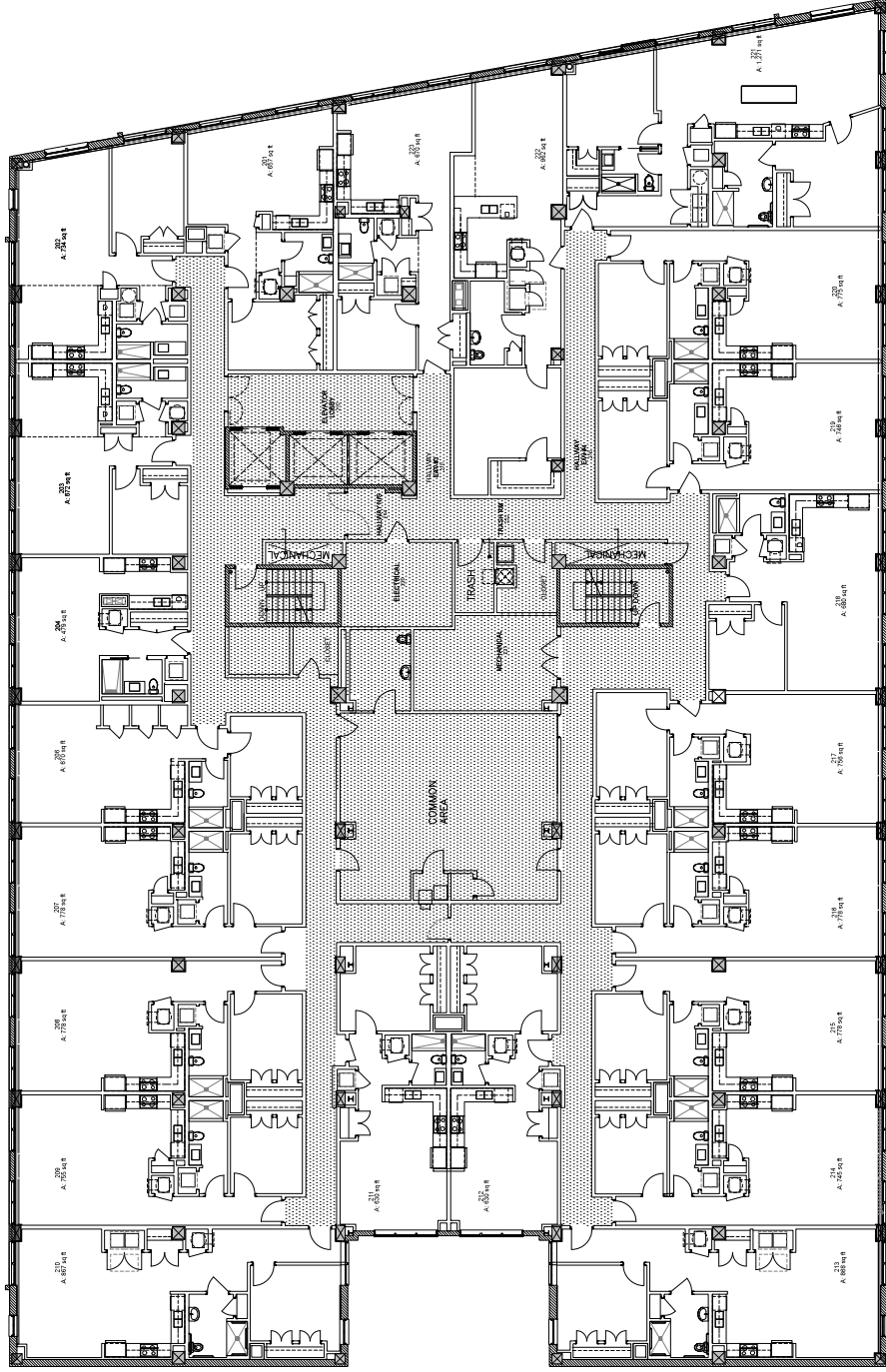
CONDOMINIUM PLANS FOR THE CALIFORNIA BUILDING CONDOMINIUMS, 1111 TULANE AVE., NEW ORLEANS, LA 70112

- Key: Common Elements
- Commercial Units:
101 - 1651 sqft (First Floor Square Footage)
102 - 2725 sqft
- Commercial Units:
101 - 2719 sqft (First and Second Floor Total Square Footage)
- Parking Units 21, 22, and 23 range 6'-3" to 9'-0" in height under ramp.



1st FLOOR
SCALE: 1/8" = 1'-0"

REV	DATE	ISSUED FOR REVIEW ONLY	BY	BN	APPR	APPR
A	9/13/22					
<p>NOTES</p> <p>EIS HAS CREATED THESE PLANS FOR THE SOLE PURPOSE OF USE AS EXHIBIT TO THE DECLARATION CREATING AND ESTABLISHING A CONDOMINIUM REGIME FOR THE CALIFORNIA BUILDING CONDOMINIUMS, AND FOR NO OTHER USE. THESE CONDOMINIUM PLANS ARE NOT CONSTRUCTION PLANS. EIS IS NOT THE ENGINEER OF RECORD INVOLVED IN ANY DESIGN OR CONSTRUCTION OF THIS PROPERTY AS OF THE DATE OF THESE PLANS.</p>						
<p>REGISTERED PROFESSIONAL ENGINEER STATE OF LOUISIANA CHRISTOPHER L. WARD PROFESSIONAL ENGINEER NO. 100002 EXPIRES 12/31/2024</p>						
DRAWN BY: BN		CHECKED BY: -		ENGINEER: -		
PROJECT APPR: -		CLIENT APPR: -				
DATE: 09/13/22		DRAWING SCALE: 1/8" = 1'-0"				
DRAWING #:		A-101				
REV: A		NO.:				
EIS PROJECT NO. SC022001		OFFICE (904)623010 FAX (904)623088 WEB www.eisllc.net				
DRIVEN TO SOLVUE		300 N. CAUSEWAY BLVD SUITE 1300 METairie, LA 70002				
EIS		CBT INVESTORS, LLC				
THE CALIFORNIA BUILDING CONDOMINIUMS, 1111 TULANE AVENUE NEW ORLEANS, LA 70112		FIRST FLOOR				



Key: Common Elements

- Units:
- 201 - 657 sq.ft
 - 202 - 734 sq.ft
 - 203 - 472 sq.ft
 - 206 - 675 sq.ft
 - 207 - 678 sq.ft
 - 208 - 778 sq.ft
 - 209 - 755 sq.ft
 - 210 - 867 sq.ft
 - 211 - 630 sq.ft
 - 212 - 630 sq.ft
 - 213 - 668 sq.ft
 - 214 - 745 sq.ft
 - 216 - 778 sq.ft
 - 217 - 756 sq.ft
 - 218 - 680 sq.ft
 - 219 - 746 sq.ft
 - 220 - 775 sq.ft
 - 221 - 1271 sq.ft
 - 222 - 962 sq.ft
 - 223 - 670 sq.ft



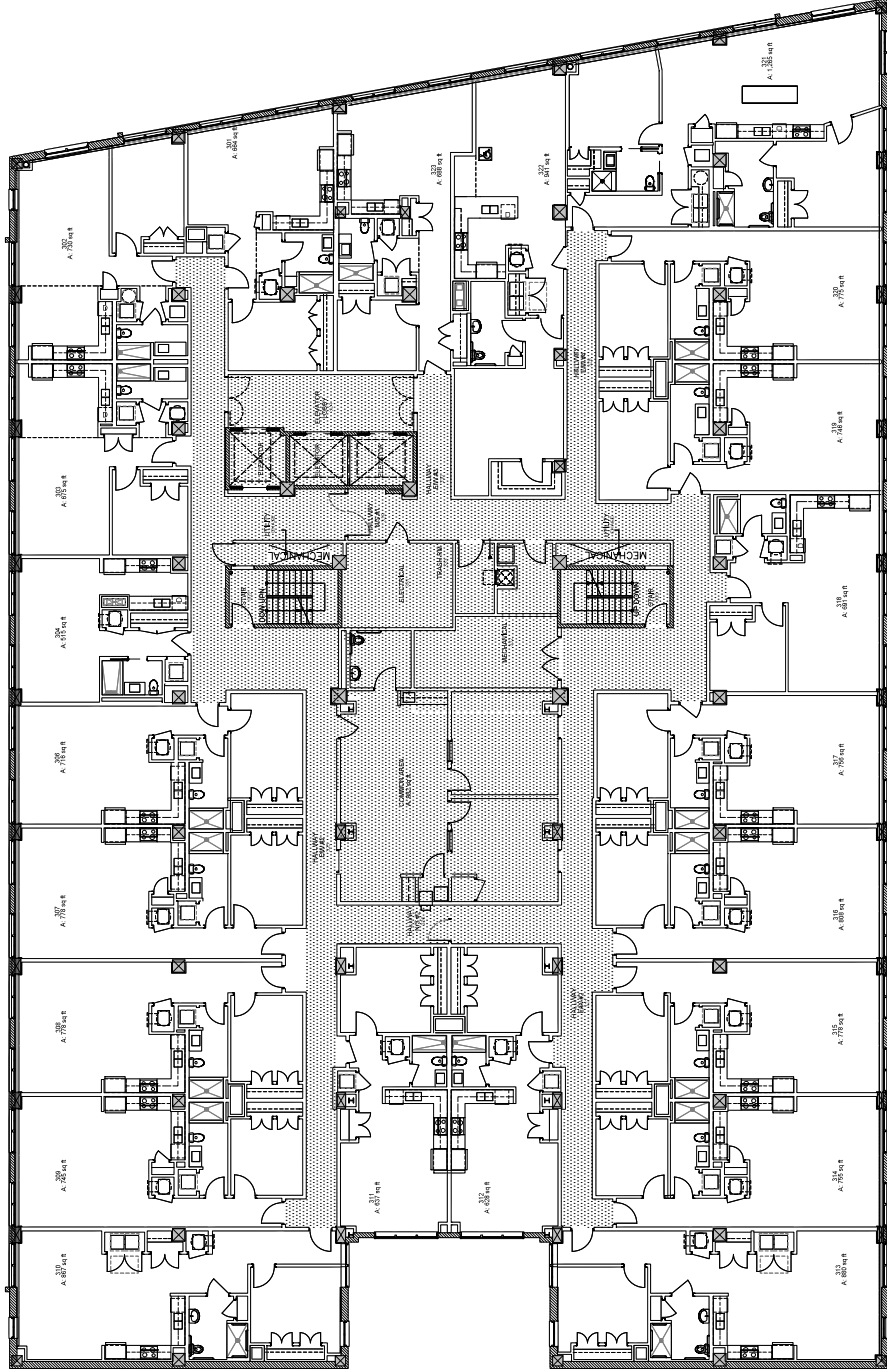
2nd FLOOR
SCALE: 1/8" = 1'-0"

CONDOMINIUM PLANS FOR THE CALIFORNIA BUILDING CONDOMINIUMS,
1111 TULANE AVE., NEW ORLEANS, LA 70112

REV	DATE	ISSUED FOR REVIEW ONLY	BY	CHKD	APPR	APPR
A	9/13/22		BN			

<p>NOTES</p> <p>EIS HAS CREATED THESE PLANS FOR THE SOLE PURPOSE OF USE AS AN EXHIBIT TO THE DECLARATION CREATING AND ESTABLISHING A CONDOMINIUM REGIME FOR THE CALIFORNIA BUILDING CONDOMINIUMS, AND FOR NO OTHER USE. THESE CONDOMINIUM PLANS ARE NOT CONSTRUCTION PLANS. EIS IS NOT THE ENGINEER OF RECORD INVOLVED IN ANY DESIGN OR CONSTRUCTION OF THIS PROPERTY AS OF THE DATE OF THESE PLANS.</p>		<p>DRAWN BY: BN</p> <p>CHECKED BY: -</p> <p>ENGINEER: -</p> <p>PROJECT APPR: -</p> <p>CLIENT APPR: -</p>	<p>OFFICE: (504) 833-0310 (504) 833-0889 FAX: (504) 833-0889 WEB: www.eis-la.com</p> <p>EIS DRIVEN TO EXOLVE</p> <p>3001 N. CAUSEWAY BLVD, SUITE 1500 METairie, LA 70002</p>	<p>CBT INVESTORS, LLC</p> <p>THE CALIFORNIA BUILDING 1111 TULANE AVENUE NEW ORLEANS, LA 70112 SECOND FLOOR</p>	
<p>EIS PROJECT NO. 5022001</p>		<p>DATE: 09/13/22</p>	<p>DRAWING SCALE: 1/8" = 1'-0"</p>	<p>DRAWING #: A-103</p>	<p>REV: A</p>

XREF INFORMATION NOT USED



Key: Common Elements

- Units:
- 301 - 664 sq.ft.
 - 302 - 656 sq.ft.
 - 303 - 678 sq.ft.
 - 304 - 515 sq.ft.
 - 306 - 716 sq.ft.
 - 307 - 778 sq.ft.
 - 308 - 778 sq.ft.
 - 309 - 745 sq.ft.
 - 310 - 867 sq.ft.
 - 311 - 637 sq.ft.
 - 312 - 628 sq.ft.
 - 313 - 860 sq.ft.
 - 314 - 728 sq.ft.
 - 315 - 728 sq.ft.
 - 316 - 808 sq.ft.
 - 317 - 756 sq.ft.
 - 318 - 691 sq.ft.
 - 319 - 746 sq.ft.
 - 320 - 775 sq.ft.
 - 321 - 1265 sq.ft.
 - 322 - 941 sq.ft.
 - 323 - 688 sq.ft.

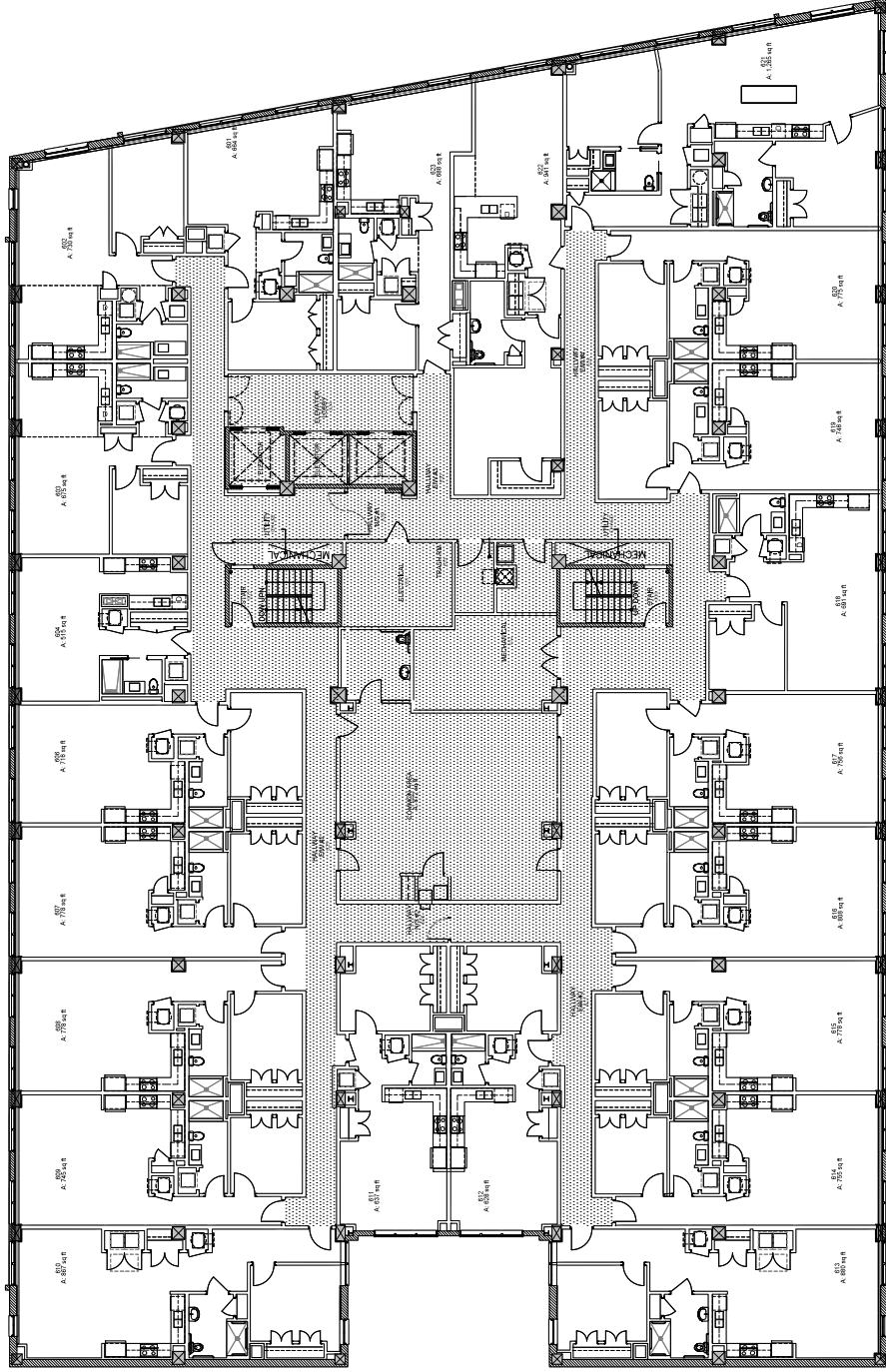


3RD FLOOR
SCALE: 1/8" = 1'-0"

CONDOMINIUM PLANS FOR THE CALIFORNIA BUILDING CONDOMINIUMS,
1111 TULANE AVE., NEW ORLEANS, LA 70112

		OFFICE: (504) 833-0310 FAX: (504) 833-8889 WEB: www.eis-la.com		CBT INVESTORS, LLC THE CALIFORNIA BUILDING 1111 TULANE AVENUE NEW ORLEANS, LA 70112 THIRD FLOOR	
DRAWN BY: BN CHECKED BY: - ENGINEER: - PROJECT APPR: - CLIENT APPR: -	3001 N. CAUSEWAY BLVD, SUITE 1500 METairie, LA 70002	EIS PROJECT NO. 5022001	DATE: 09/13/22	DRAWING SCALE: 1/8" = 1'-0"	DRAWING #: A-104
<p>NOTES</p> <p>EIS HAS CREATED THESE PLANS FOR THE SOLE PURPOSE OF USE AS AN EXHIBIT TO THE DECLARATION CREATING AND ESTABLISHING A CONDOMINIUM REGIME FOR THE CALIFORNIA BUILDING CONDOMINIUMS, AND FOR NO OTHER USE. THESE CONDOMINIUM PLANS ARE NOT CONSTRUCTION PLANS. EIS IS NOT THE ENGINEER OF RECORD INVOLVED IN ANY DESIGN OR CONSTRUCTION OF THIS PROPERTY AS OF THE DATE OF THESE PLANS.</p>					
REV. DATE A 9/13/22	ISSUED FOR REVIEW ONLY	BY: BN	CHNG: - APPR: - APPR: -	REVISION DESCRIPTION	NO. A

XREF INFORMATION NOT USED



Key: Common Elements

- Units:
- 601 - 664 sq.ft
 - 602 - 730 sq.ft
 - 603 - 712 sq.ft
 - 604 - 708 sq.ft
 - 606 - 716 sq.ft
 - 607 - 778 sq.ft
 - 608 - 745 sq.ft
 - 609 - 745 sq.ft
 - 610 - 867 sq.ft
 - 611 - 637 sq.ft
 - 612 - 628 sq.ft
 - 613 - 880 sq.ft
 - 614 - 735 sq.ft
 - 616 - 808 sq.ft
 - 617 - 750 sq.ft
 - 618 - 690 sq.ft
 - 619 - 746 sq.ft
 - 620 - 775 sq.ft
 - 621 - 1265 sq.ft
 - 622 - 941 sq.ft
 - 623 - 688 sq.ft



6th FLOOR
SCALE: 1/8" = 1'-0"

CONDOMINIUM PLANS FOR THE CALIFORNIA BUILDING CONDOMINIUMS,
1111 TULANE AVE., NEW ORLEANS, LA 70112

REV	DATE	ISSUED FOR REVIEW ONLY	BY	CHKD	APPR	APPR
A	9/13/22		BN	-	-	-

REVISION DESCRIPTION	DATE	BY	CHKD	APPR	APPR
ISSUED FOR REVIEW ONLY	9/13/22	BN	-	-	-

<p>NOTES</p> <p>EIS HAS CREATED THESE PLANS FOR THE SOLE PURPOSE OF USE AS AN EXHIBIT TO THE DECLARATION CREATING AND ESTABLISHING A CONDOMINIUM REGIME FOR THE CALIFORNIA BUILDING CONDOMINIUMS, AND FOR NO OTHER USE. THESE CONDOMINIUM PLANS ARE NOT CONSTRUCTION PLANS. EIS IS NOT THE ENGINEER OF RECORD INVOLVED IN ANY DESIGN OR CONSTRUCTION OF THIS PROPERTY AS OF THE DATE OF THESE PLANS.</p>		<p>DRAWN BY: BN</p> <p>CHECKED BY: -</p> <p>ENGINEER: -</p> <p>PROJECT APPR: -</p> <p>CLIENT APPR: -</p>	<p>3001 N. CAUSEWAY BLVD, SUITE 1500 METairie, LA 70002</p> <p>EIS DRIVEN TO EXOLVE</p> <p>OFFICE: (504) 833-3310 FAX: (504) 833-3889 WEB: www.eisllc.com</p>	<p>CBT INVESTORS, LLC</p> <p>THE CALIFORNIA BUILDING 1111 TULANE AVENUE NEW ORLEANS, LA 70112 SIXTH FLOOR</p>
--	--	--	--	---

DATE:	09/13/22	DRAWING SCALE:	1/8" = 1'-0"
EIS PROJECT NO.	SC022001	DRAWING #:	A-107

